

Davimast™

PPE anchor point or modular load lifting system.

Davimast™

PPE anchor point or modular load lifting system

The Davimast™ is a PPE anchor point or modular load lifting system that can be used:

- As a PPE anchor point when equipped with the 360° rotating anchor points to secure two users of 310 lb. (140 kg).
- As a temporary anchor point for Tempo III lifeline when equipped with the 360° rotating anchor points.
- As a PPE anchor point when equipped with a 50 or 100 ft. (15 or 30 m) Blocfor® R bi-directional retrieval lifeline and a bracket to secure an operator on the surface and an operator in a manhole.
- As a load lifting anchor point when equipped with a Tractel® 80 ft. (24 m) winch and bracket.

QUALITY

- Compact
- Easy to use

ERGONOMICS

- Easy handling / Very lightweight
- Easy storage
- Easy to transport
- Easy to install: no tools required for assembly

SPECIFICATIONS

- Weight: 19.8 lb. (9.9 kg) without accessories and adapters.
- Compatible for use in confined space applications.
- Compatible with horizontal lifelines with an impact force inferior to 1,650 lb. (750 daN).
- Can be used by:
 - Up to two users of 310 lb. (140 kg) each—one worker in the confined space and one worker operating the Davimast—depending on the fall arrest system used. Each user must be secured on separated PPE anchor points.
 - A single user up to 310 lb. (140 kg) and a maximum material lifting capacity of 500 lb. (225 kg), depending on the systems used.
 - Material lifting maximum capacity 500 lb. (225 kg), depending on the lifting tools used.

APPLICATIONS

- Rescue
- Confined spaces
- Rope works
- Manholes
- Pits

APPLICABLE STANDARDS

- CSA Z259.15-17
- ANSI Z359.18-17
- Meets OSHA requirements

FLEXIBILITY

- Provides an elevated anchorage point.
- Well suited for use as a transportable anchor.
- Anchorage for up to two users
- Can be used for lifting materials.
- Different type of adapters.
- Different brackets for multiple uses.
- Modular: different combinations possible with lifting and fall arrest device Tractel® products.



Tractel® supports you in your project and offers you a wide range of individual and collective protection solution that secures the operations. Contact us for more information!

Davimast™

different brackets for multiple uses

Davimast™ with 360° rotating anchor points



Provides two independent 360° rotating anchor points for fall arrest anchorage.

For up to two users: 310 lb. (140 kg) each.

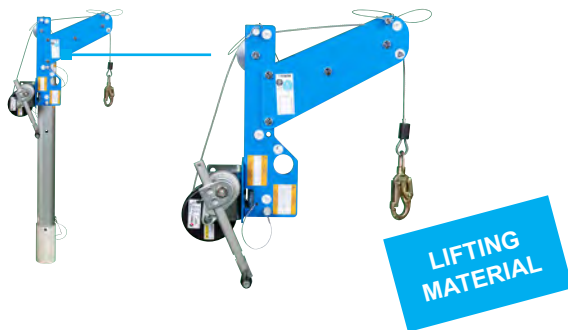
Davimast™ with Blocfor® R bi-directional retrieval lifeline and bracket



Can be easily integrated on the Davimast™, without tools. One anchor point allows to secure an operator up to 310 lb. (140 kg), equipped with his tools.

- Automatic fall protection device with integrated winch for ascending or descending during a possible rescue operation.
- Shock-absorption system ensures that the user will not be subjected to an impact of more than 1,350 lb. (600 daN) even if the fall occurs when the cable is fully unwound.
- The Blocfor® cable is guided by equipped pulleys with an anti-jump cable fixed on the head of Davimast™.

Davimast™ with winch and bracket



The winch meets the requirements of hoisting winches with a maximum load of 500 lb. (225 kg). One anchor point allows to secure an operator up to 310 lb. (140 kg), equipped with his tools.

- Cable length of 80 ft. (24 m).
- The winch cable is guided by equipped pulleys with an anti-jump cable fixed on the arrow of Davimast™.

Davimast™ with two 360° anchor points for horizontal lifeline



Provides anchor points for installation of a Tempo III temporary lifeline.

For three users: 310 lb. (140 kg) each.

Davimast™

different adapters for multiple uses

Wall mounted adapter



Wall mounted adapter fixed to concrete or steel vertical structures.

Adapter with anchoring points to secure two persons (330 lb. [150 kg] each) at the same time.

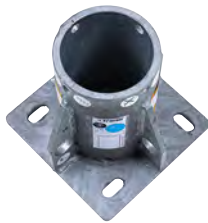
Clearance mural adapter



Clearance mural adapter (with 11⅞ in. [291 mm] offset) fixed to concrete or steel vertical structures.

Adapter with anchoring points to secure two persons (330 lb. [150 kg] each) at the same time.

Mounted floor adapter



Mounted floor adapter fixed to concrete or steel horizontal structure.

Adapter with anchoring points to secure two persons (330 lb. [150 kg] each) at the same time.

Flush floor adapter



Flush adapter moulded into the concrete. Ideal to have no obstacles on the ground surface to prevent falls.

Delivered with a special protection stopper, to use when Davitrac is not used/integrated on the adapter.

Davimast™

PPE anchor point or modular load lifting system

Accessories

CODE	MODEL NAME
DM3000	Davimast™ mast
Adapters	
T90DAVI-WMA	Wall mounted base
T90DAVI-CMA	Clearance mural base
T90DAVI-MFA	Mounted floor base
T90DAVI-FFA	Flush floor base
T90DAVI-CAP	Protective cap for flush floor base
Double 360° rotating PPE anchors	
D90A	Double 360° rotating PPE anchors Davimast™ bracket
Blocfor® bi-directional retrieval lifeline	
T1T50GKDM	50 ft. (15 m) Blocfor® bi-directional retrieval lifeline with galvanized steel wire rope and Davimast™ bracket
T1T50SKDM	50 ft. (15 m) Blocfor® bi-directional retrieval lifeline with stainless steel wire rope and Davimast™ bracket
T1T100GKDM	100 ft. (30 m) Blocfor® bi-directional retrieval lifeline with galvanized steel wire rope and Davimast™ bracket
T1T100SKDM	100 ft. (30 m) Blocfor® bi-directional retrieval lifeline with stainless steel wire rope and Davimast™ bracket
Work winch	
M4032PB080K	80 ft. (24 m) work winch with galvanized steel wire rope and Davimast™ bracket
Tempo III temporary horizontal Kernmantle lifeline	
H66500	Tempo III temporary horizontal Kernmantle lifeline
Accessories	
DTTR1000	Davimast™ transport trolley
XBDM3000	Davimast™ transport bag



GLOBAL REACH



NORTH AMERICA

CANADA

Tractel Ltd.
11020 Mirabeau Street
Montreal, QC H1J 2S3, Canada
Phone: +1 800 561-3229
Fax: +1 514 493-3342
Email: tractel.canada@tractel.com

Tractel Swingstage

1615 Warden Avenue
Toronto, ON M1R 2T3, Canada
Phone: +1 800 561-3229
Fax: +1 416 298-0168
Email: marketing.swingstage@tractel.com

MÉXICO

Tractel México S.A. de C.V.
Galileo #20, Oficina 504.
Colonia Polanco
México, D.F. CP. 11560
Phone: +52 55 67218719
Fax: +52 55 67218718
Email: tractel.mexico@tractel.com

USA

Tractel Inc.
51 Morgan Drive
Norwood, MA 02062, USA
Phone: +1 800 421-0246
Fax: +1 781 826-3642
Email: tractel.usa-east@tractel.com
168 Mason Way,
Unit B2
City of Industry, CA 91746, USA
Phone: +1 800 675-6727
Fax: +1 626 937-6730
Email: tractel.usa-west@tractel.com

Safety Products Group

4064 Peavey Road
Chaska, MN 55318, USA
Phone: +1 866 933-2935
Email: info@safetypg.com

BlueWater L.L.C.

4064 Peavey Road
Chaska, MN 55318, USA
Phone: +1 866 579-3965
Email: info@bluewater-mfg.com

Fabenco, Inc.

2002 Karbach St.
Houston, Texas 77092, USA
Phone: +1 713 686-6620
Fax: +1 713 688-8031
Email: info@safetygate.com

EUROPE

GERMANY

Tractel Greifzug GmbH
Scheidtbachstrasse 19-21
51469 Bergisch Gladbach, Germany
Phone: +49 22 02 10 04-0
Fax: +49 22 02 10 04 70
Email: info.greifzug@tractel.com

LUXEMBOURG

Tractel Secalt S.A.
Rue de l'Industrie
B.P 1113 - 3895 Foetz, Luxembourg
Phone: +352 43 42 42-1
Fax: +352 43 42 42-200
Email: secalt@tractel.com

SPAIN

Tractel Ibérica S.A.
Carretera del Medio, 265
08907 L'Hospitalet del Llobregat
Barcelona, Spain
Phone: +34 93 335 11 00
Fax: +34 93 336 39 16
Email: infotib@tractel.com

FRANCE

Tractel S.A.S.
RD 619 Saint-Hilaire-sous-Romilly
BP 38 Romilly-sur-Seine
10102, France
Phone: +33 3 25 21 07 00
Fax: +33 3 25 21 07 11
Email: info.tsas@tractel.com

IFMS S.A.S.

32, rue du Bois Galon
94120 Fontenay-sous-Bois, France
Phone: +33 1 56 29 22 22
Email: ifms.tractel@tractel.com

Tractel Solutions S.A.S.

77-79, rue Jules Guesde
69230 Saint-Genis-Laval, France
Phone: +33 4 78 50 18 18
Fax: +33 4 72 66 25 41
Email: info.tractelsolutions@tractel.com

GREAT BRITAIN

Tractel UK Limited
Old Lane Halfway
Sheffield S20 3GA, United Kingdom
Phone: +44 114 248 22 66
Email: info@tractel.co.uk

ITALY

Tractel Italiana SpA
Viale Europa 50
Cologno Monzese (Milano) 20093, Italy
Phone: +39 02 254 47 86
Fax: +39 02 254 71 39
Email: infoit@tractel.com

NETHERLANDS

Tractel Benelux BV
Paardeweide 38
Breda 4824 EH, Netherlands
Phone: +31 76 54 35 135
Fax: +31 76 54 35 136
Email: sales.benelux@tractel.com

PORTUGAL

Lusotractel Lda
Bairro Alto Do Outeiro Armazém 1
Trajouce, 2785-653 S. Domingos
de Rana, Portugal
Phone: +351 214 459 800
Fax: +351 214 459 809
Email: comercial.lusotractel@tractel.com

POLAND

Tractel Polska Sp. Zo.o.
ul. Bysławska 82
Warszawa 04-993, Poland
Phone: +48 22 616 42 44
Fax: +48 22 616 42 47
Email: tractel.polska@tractel.com

NORDICS

Tractel Nordics (Scanclimber Oy)
Turkkirata 26
FI - 33960
Pirkkala, Finland
Phone: +358 10 680 7000
Fax: +358 10 680 7033
Email: tractel@scanclimber.com

RUSSIA

Tractel Russia O.O.O.
Olympiyskiy Prospect 38, Office 411
Mytishchi, Moscow Region
141006, Russia
Phone: +7 495 989 5135
Email: info.russia@tractel.com

ASIA

CHINA

Shanghai Tractel Mechanical Equip. Tech. Co. Ltd.
2nd floor, Block 1, 3500 Xiupu road,
Kangqiao, Pudong,
Shanghai, People's Republic of China
Phone: +86 21 6322 5570
Fax: +86 21 5353 0982

SINGAPORE

Tractel Singapore Pte Ltd.
50 Woodlands Industrial Park E7
Singapore 757824
Phone: +65 6757 3113
Fax: +65 6757 3003
Email: enquiry@tractelsingapore.com

INDIA

Secalt India Pvt Ltd.
412/A, 4th Floor, C-Wing,
Kailash Business Park, Veer Savarkar Road,
Parkside, Vikhroli West,
Mumbai 400079, India
Phone: +91 22 25175470/71/72
Email: info@secalt-india.com

TURKEY

Knot Yapı ve İş Güvenliği San. Tic. A.Ş.
Cevizli Mh. Tugay Yolu CD.
Nuvo Dragos Sitesi
A/120 Kat.11 Maltepe
34846 Istanbul, Turkey
Phone: +90 216 377 13 13
Fax: +90 216 377 54 44
Email: info@knot.com.tr

UAE

Tractel Secalt SA Dubai Branch
Office 1404, Prime Tower Business Bay
PB 25768 Dubai, United Arab Emirates
Phone: +971 4 343 0703
Email: tractel.me@tractel.com

ANY OTHER COUNTRIES

Tractel S.A.S.

RD 619 Saint-Hilaire-sous-Romilly
BP 38 Romilly-sur-Seine
10102 France
Phone: +33 3 25 21 07 00
Fax: +33 3 25 21 07 11
Email: info.tsas@tractel.com

